



KANFE



MASS.



In Haitian Creole, “kanpe” means to stand up. KANPE is a foundation that brings support to most vulnerable families in Haiti to help them achieve autonomy, so that they can “stand up”.

KANPE’s Philosophy

KANPE’s actions focus on the Haitian population, identifying and expressing their needs. Support of initiatives is then provided in conjunction with the community and local partners.

The Thomonde Region + Baille-Tourible

KANPE is active in the Central Plateau region of Haiti, in a municipality called Thomonde, and more specifically in the community of Baille Tourible. This region is one of the most affected by declining agricultural production and poverty.



Right: The Marching Band of Baille Tourible, led by Jean-Germain Duvelsin greets the KANPE and MASS teams during their September 2018 visit.

What's the need?



In 2020, Haiti remains the only North American, Latin American or Caribbean country to be classified as a low development country, ranking 170 out of 189 countries in reporting from the United Nations.

Central Plateau of Haiti

The Central Plateau of Haiti is among the poorest in the country. It faces an alarming level of deforestation that causes erosion and affects agricultural production.

An Integrated Approach

At the beginning of 2011, Baille Tourible was significantly affected by the cholera epidemic. KANPE's work to open a clinic in the community, now serving over 20,000 inhabitants each year, has decreased the cholera concern in the region. Since then, KANPE's approach has evolved into a connected network of programs acting at different scales: health & nutrition, education, food sovereignty and climate resilience, entrepreneurship, leadership, and local infrastructure strengthening. Their ambition now is to realize a new facility, or campus, which will be a physical home to support this connected network of programs.

Human Development Index measures the average achievements in a country in accordance with three basic dimensions of human development:

- Health: long & healthy life
- Knowledge: schooling
- Income: standard of living

1 United Nations Development Programme, Human Development Indices and Indicators, 2018 Statistical Update

2 MASS looks at impact through 5 Es - Education, Environment, Economy, Emotion, Equity.

EQUITY

5 GENDER EQUALITY



UN Sustainable Development Goal 5: Achieve gender equality and empower all women and girls

Goal 5: Achieve gender equality and empower all women and girls

144

Haiti ranks 144 out of 188 countries ranked for gender equality by the UN

188

EDUCATION

4 QUALITY EDUCATION



UN Sustainable Development Goal 4: Ensure inclusive and quality education for all and promote lifelong learning

Goal 4: Ensure inclusive and quality education for all and promote lifelong learning

5.3

The mean years of schooling in Haiti is 5.3.

School aged adolescents attend secondary school

1/4

ECONOMY

8 DECENT WORK AND ECONOMIC GROWTH



UN Sustainable Development Goal 8: Promote inclusive and sustainable economic growth, employment and decent work for all

Goal 8: Promote inclusive and sustainable economic growth, employment and decent work for all

-1.7%

GDP growth rate in Haiti (% in 2019)

Haiti Youth Unemployment Rate (2020)

31%

Overcrowding in the current national school.





Our Vision

The KANPE supported campus will be a model for economic growth in Haiti's Central Plateau. The campus will focus on education for all ages, and will work in synergy with the medical clinic and the agriculture programs. It aims to have construction integrate with the local workforce, using local resources and building techniques. Site analysis work to define the appropriate location for this campus is ongoing, and includes immersive dialogue with the local community members.



Life-Long Learning

Our vision is to create a school used on weekends as well as weekdays, at all times of the day, and by individuals of every age in the community. Suggested schedule and potential class sizes include:

- Primary school: 8am-1pm (400-500 kids)
- High school: 1-5pm (50-200 teenagers)
- Adult school: 1-5pm or weekends (literacy and professional skills: 50-100 adults)
- Agriculture classes: 1-5pm or weekends (50-500, kids and adults)

Beyond School

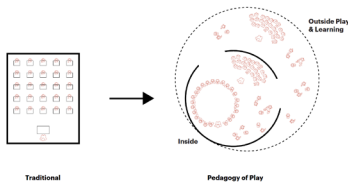
The campus will support the community beyond traditional notions of "school". Based on immersive dialogue with the local community, including a week of research conducted by KANPE using design thinking methodologies in May 2018, the following additional desires for the campus were defined:

- Farm: kitchen garden, small animal farm, plant nursery, fish nursery (tilapia), compost and natural fertilizer production
- Soccer and basketball fields + sports installations for boys and girls
- Ecological latrines (reuse of waste as agriculture compost and fertilizer)
- Community library
- Dormitory (for teachers, medical staff and visitors)
- Musical instruments and valuable objects storage
- Workshop and tools storage
- Sports equipment storage
- Small KANPE office
- Water storage and reservoirs
- Incinerator
- Community Centre* : for community and group meetings, dances and music classes, village reunions

Near-term Projects

As KANPE works towards the vision for this holistic campus, there are numerous immediate projects you can help support.

1 - A Place to Learn



An upgrade to the community's only public school, a 20+ year old structure, could help reduce overcrowding in classrooms, help attract (and retain) teachers, and improve safety by preventing further erosion of the building's foundations.

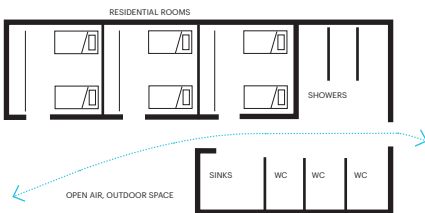
Classroom Building - 386m²

- +4 Primary Classrooms
- Latrine Upgrade
- Build new french drain around campus
- New Dry Food Storage
- Demolish walls of existing sleeping room and food storage to enlarge existing classrooms

Minor Upgrades to Existing Building

- Gutters, paint, fix furniture, install permanent wall in to separate large classroom

2 - A Place to Stay



For the clinic and school to continue to recruit quality clinicians and teachers, a more adequate, shared residential facility can be built.

Shared Residential Facility -182 m²

- 6 rooms with two bunk beds per room
- Toilets, shower, sinks
- Kitchen
- Small, shared common space / dining
- Laundry
- Building Storage area

2 - A Place to Play



The marching band of Baille Tourible, led by Jean-Germain Duvelsaint, currently has over 70 members and is the pride of the whole community. A place for the entire band to gather and practice, protected from the elements, is needed. In addition, the existing football pitch could be upgraded to make it usable in the rainy season.

Marching Band Practice Facility - 244m²

- 1 practice room (70 ppl x 3.2 m²)

Create Year-round Playable Football Pitch

Heart of Baile Tourible

This plan diagram shows locations of existing KANPE-supported projects and keyed areas where immediate support can help the community.



1

National School

Pictured above, from left to right: an existing classroom subdivided with a temporary wall to accommodate an extra classroom, evidence of erosion near foundations, Alan Ricks of MASS Design investigating the site with Fritz Louis of KANPE, limited sleeping space for teachers.



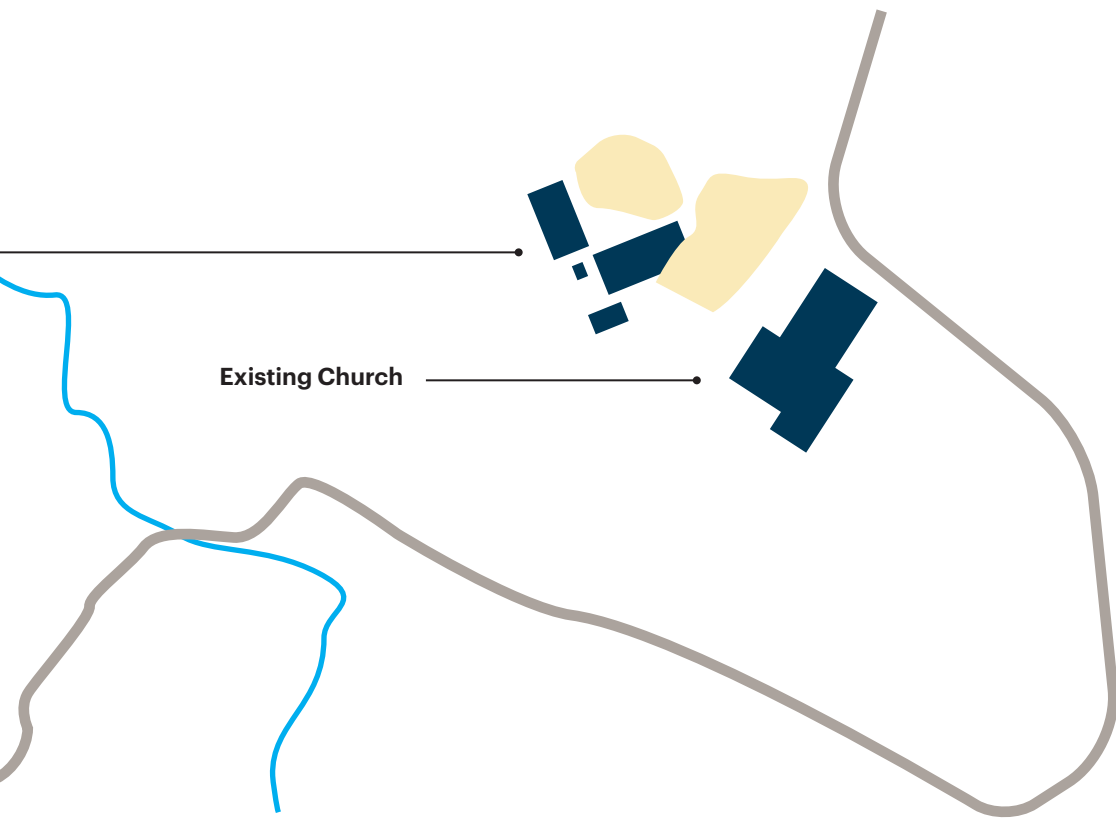
2

Health Clinic

Pictured above is the community's health clinic a facility supported by KANPE where current residences exist primarily for visiting doctors

3

***Site location to be determined**







Existing Church



Examples of local vernacular
 Pictured from left to right:
 colombier, a home, a thatched
 roof shelter

Site Plan Legend

-  Community Structures
-  Gathering Areas
-  Road
-  River





Partners

Haiti is filled with people who have talents and skills in many areas. KANPE works to find the best local Haitian organizations and talents who can accompany these communities in attaining their goals in health, education, agriculture, entrepreneurship, leadership, and local infrastructure strengthening.



Health

KANPE partners with Zanmi Lasante (the Haitian branch of Partners in Health) to support access to healthcare by eliminating financial barriers in vulnerable communities.

In 2011, we set up a clinic in Baille Tourible. Before that, the nearest clinic was 6 hours away on foot. Today the medical clinic:

- Serves over 20,000 residents.
- Has recorded more than 82,000 visits since opening in 2011.
- More than 1,700 cases of cholera have been treated since 2011.
- No new cases has been record since January 2018.
- More than 1,000 Malaria tests are performed each year.
- Distribution of a basic water purification system to 550 families has been achieved.
- Treatment of moderate and severe malnutrition (avg. 228 children/year since 2016).
- Family planning services (average 1,073 visits/year) and prenatal visits (average 1,124 visits/year).

Education

KANPE partners with Summits Education to support the only local primary public school (450 students) of Baille Tourible.

The partnership started in 2017.

Summits' vision is to empower a generation of future leaders with the necessary tools to shape a more just, more independent, and more enterprising Haiti and it begins with access to an exemplary education.

Since 2011, KANPE's support has contributed to provide:

- School supplies for 450 students (9 grades).
- Teacher training.
- Building renovation and maintenance, along with resources for the construction of a kitchen for the school canteen.





Partners



Agriculture

KANPE partners with Papaye Peasant Movement (MPP), a regional agricultural organization, to support a community of farmers from ODB, the local Development Organization of Baille Tourible.

Agriculture represents almost 98% of the local population's economy, and the ODB is the most important group of farmers.

Since 2011:

- Distribution of bean seeds to 250 farmers.
- Distribution of nearly 3,300 farm animals.
- Production of 12,000 fruit and forest seedling (Reforestation campaign).
- Training program for the local farmers' association members in:
 - basic accounting.
 - soil and water conservation techniques.
 - compost production technique and natural insecticides.

MASS.

Architecture

KANPE is partnering with MASS Design Group to create a vision and a master plan for infrastructure improvements in Baille Tourible.

In September 2018, MASS began this process by engaging project stakeholders on site in order to identify their needs, understand their values, and pinpoint opportunities for positive impact. With insight from this visit, MASS worked with KANPE to articulate building projects that can help amplify the dignity of the community of Baille Tourible.

MASS has a long history of working with Partners in Health, a key partner organization of KANPE and following the tragic earthquake in 2010, operated an office in Haiti which built a Cholera Treatment Center and a Tuberculosis Hospital.



Building Process

The construction of the KANPE supported campus will leverage the building process to create systemic impact through using local materials and training the local labor force.

Training Local Labor

The construction process would employ and train local labor in skills such as masonry, weaving, and carpentry. By empowering the local labor force with new skill sets, the construction will help build the local economy.

This project would be the first “technical training” KANPE could offer to the local adult population. It could also help them start their own micro-business afterward.



Brick Makers & Masons



Masonry Walls



Weavers



Woven Screens, Doors, Ceilings



Carpenters



Furniture

Local Materials

Using local materials in innovative ways will reinvest construction costs into the local economy.

Systemic Impact

The impact of this approach can be measured through a series of metrics, such as the number of jobs that are created, gender equity on site, and the number of new businesses that develop after construction.

#

Number of Jobs Created

%

Percentage of Women Employed

#

Number of Enterprises Created



KANPE.ORG

MASS.